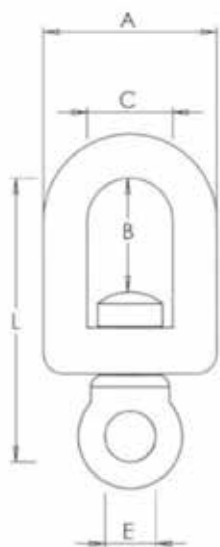


### Single Eye Forged Mooring Swivel

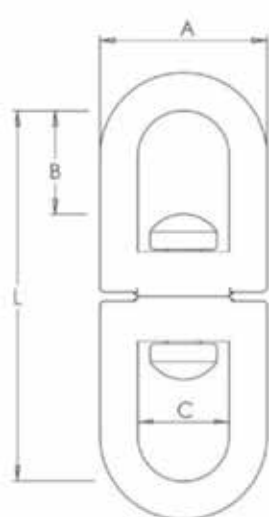
Finish: Hot Dipped Galvanized  
 Test: Batch Tested and Certified  
 Markings: M.B.L. - Size - Batch Number  
 Material: High Tensile / Low Carbon



Part Code	M.B.L (t)	D (mm)	A (mm)	B (mm)	C (mm)	E (mm)	L (mm)	Weight ea (Kg)
NHV0013SEG	6.0	13	60	35	36	17	100	0.5
NHV0016SEG	8.0	16	72	43	40	23	125	1.0
NHV0020SEG	12.6	20	83	45	45	26	145	1.5
NHV0022SEG	25.2	22	93	53	49	29	170	2.3

## Double Eye Forged Mooring Swivel

Finish: Hot Dipped Galvanized  
 Test: Batch Tested and Certified  
 Markings: M.B.L. - Size - Batch Number  
 Material: High Tensile / Low Carbon



Part Code	M.B.L (t)	D (mm)	A (mm)	B (mm)	C (mm)	L (mm)	Weight ea (Kg)
NHV0013DEG	6.0	13	60	35	36	135	0.8
NHV0016DEG	8.0	16	72	43	40	165	1.3
NHV0020DEG	12.6	20	83	45	45	185	2.1
NHV0022DEG	25.2	22	93	53	49	215	3.3

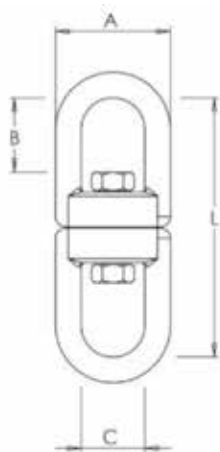
### Double Eye Mooring Swivel

Finish: Polished

Test: Batch Tested and Certified

Markings: M.B.L. - Size - Batch Number

Material: AISI 316 Stainless Steel



Part Code	M.B.L (t)	d (mm)	B (mm)	C (mm)	D (mm)	E (mm)	F (mm)	L (mm)	Weight each (Kg)
NHV0008DSS	1.2	8	20	20	36	20	8	90	0.15
NHV0010DSS	3.2	10	27	24	44	24	10	115	0.29
NHV0013DSS*	4.8	13	35	31	56	31	12	148.5	0.60
NHV0016DSS*	6.0	16	46	39	71	39	16	191	1.10
NHV0019DSS*	7.2	19	54	39	77	40	20	231	2.25
NHV0022DSS	8.4	22	55	40	90	46	22	254	3.13

\* Denotes Drop Forged Body